



1



2

VOLO DESIGN BY MOBILIARIO SOSTENIBILE FOR JANE HAMLEY WELLS

1	BENCH
DIMENSIONS (IN)	70.9W x 27.2D x 32.2H/17.7 Seat Height
ITEM NUMBER	10172
MATERIALS	Heat-treated wood, steel

Specify steel finish: Galvanized or powder coated

Specify powder coat color: Metallic anthracite, metallic black, metallic pewter, metallic silver, beige 1001, cobalt blue 5013, fir green 6009, pure white 9010, stone grey 7030, traffic red 3020

Additional information: Ground fixing standard, M10 rawlplugs (not included). Available without, must specify.

Arm height: 25.0 inches

Structure made of 5mm thick carbon steel sheet. Steel frame hot dip galvanized at 450°C to ISO 1461:2010 specification. Degreased to remove grease, oils and metallic residues. Phosphatized to form a base for the corrosion resistant paint. Electrostatic paint application, kiln cured.

Heat-treated wood is Nordic pine and spruce thermally modified at 212°C, non-toxic, residue-free, dimensionally stable, classified as durability class 2 (BS EN 350) "durable" for all weather conditions.

Manufacturing processes and finishes adhere to EU and ISO 14001 standards for environmental sustainability.

View swatches under FINISH OPTIONS

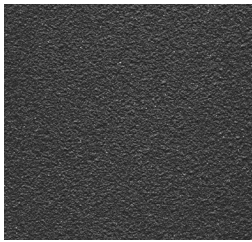
2	BENCH WITH ARMS
DIMENSIONS (IN)	70.9W x 27.2D x 32.2H/17.7 Seat Height
ITEM NUMBER	10173
MATERIALS	Heat-treated wood, steel

Mobiliario Sostenibile reserves the right to make minor design changes and to discontinue furniture items, materials and/or colors without notice. Printed colors cannot be guaranteed for accuracy.

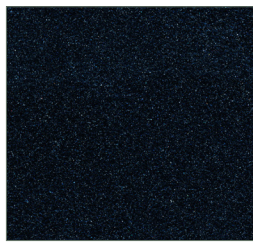
FINISH OPTIONS

METAL – MOBILIARIO SOSTENIBILE FOR JANE HAMLEY WELLS

For color reference only. Suitable for outdoor use.



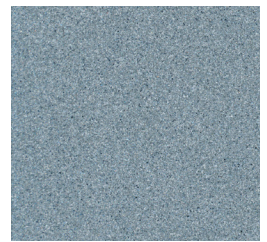
Anthracite



Black



Pewter



Silver



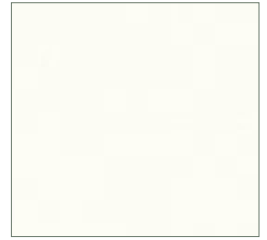
Beige 1001



Cobalt Blue 5013



Fir Green 6009



Pure White 9010



Stone Grey 7030



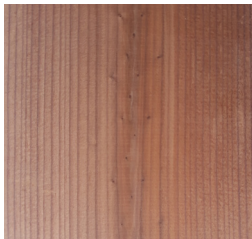
Traffic Red 3020



Galvanized Steel

WOOD – MOBILIARIO SOSTENIBILE FOR JANE HAMLEY WELLS

For color reference only. Suitable for outdoor use.



Heat-treated wood