

FUSION

DESIGN BY MOBILIARIO SOSTENIBILE FOR JANE HAMLEY WELLS

1-SEAT BENCH	
DIMENSIONS (IN)	23.6W x 23.2D x 34.8H/18.7 Seat Height
ITEM NUMBER	10171
MATERIALS	White hydrofused concrete, steel

Mobiliario Sostenibile reserves the right to make minor design changes and to discontinue furniture items, materials and/or colors without notice. Printed colors cannot be guaranteed for accuracy.

Specify steel finish: Galvanized or powder-coated

Specify powder-coat color: Metallic anthracite, metallic black, metallic pewter, metallic silver, beige 1001, cobalt blue 5013, fir green 6009, pure white 9010, stone grey 7030, traffic red 3020

Additional information: Ground fixing standard, M10 rawlplugs 10cm length (not included). Available without, must specify. Units can be ganged to form multi-seat bench (see image above right).

Seat and back made of 10mm carbon steel sheet, laser cut and formed. Steel hot dip galvanized at 450°C to ISO 1461:2010 specification. Degreased to remove grease, oils and metallic residues. Phosphatized to form a base for the corrosion resistant paint. Electrostatic paint application, kiln cured.

Base structure made of reinforced and hydrofused (waterproofed) concrete to repel water, grime and corrosion wrought by urban pollutants. Additional concrete colors available, minimum quantity of 30 units.

Additional powder coat colors available, minimum quantity 15 units.

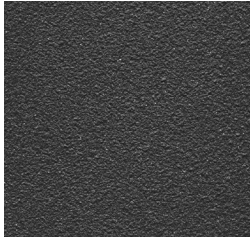
Manufacturing processes and finishes adhere to EU and ISO 14001 standards for environmental sustainability.

View swatches under FINISH OPTIONS

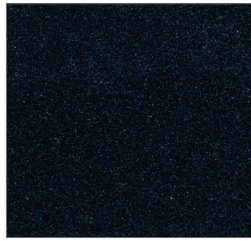
FINISH OPTIONS

METAL – MOBILIARIO SOSTENIBILE FOR JANE HAMLEY WELLS

For color reference only. Suitable for outdoor use.



Anthracite



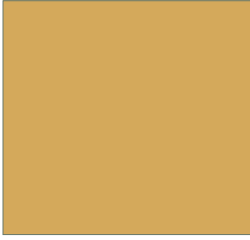
Black



Pewter



Silver



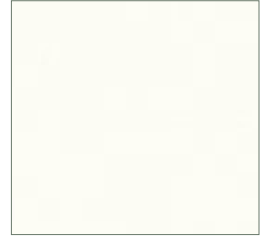
Beige 1001



Cobalt Blue 5013



Fir Green 6009



Pure White 9010



Stone Grey 7030



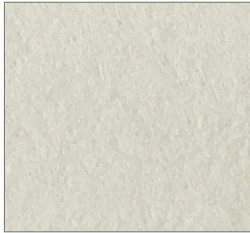
Traffic Red 3020



Galvanized Steel

HYDROFUGED CONCRETE – MOBILIARIO SOSTENIBILE FOR JANE HAMLEY WELLS

For color reference only. Suitable for outdoor use.



White Hydrofuged Concrete