

MEETING POINT DESIGN BY MOBILIARIO SOSTENIBILE FOR JANE HAMLEY WELLS

BENCH	
DIMENSIONS (IN)	70.9W x 28.7D x 28.0H/17.1 Seat Height
ITEM NUMBERS	DSIN101401
MATERIALS	Fiberglass, powder coated steel

Mobiliario Sostenibile reserves the right to make minor design changes and to discontinue furniture items, materials and/or colors without notice. Printed colors cannot be guaranteed for accuracy.

Specify fiberglass RAL color: Concrete grey 7023, jet black 9005, pure white 9010, traffic red 3020

Specify powder coat frame color: Metallic anthracite, metallic black, metallic pewter, metallic silver, beige 1001, cobalt blue 5013, fir green 6009, pure white 9010, stone grey 7030, traffic red 3020

Additional information: Ground fixing standard, M10 rawlplugs (not included). Available without, must specify. Optional anti-graffiti protectant available (cost additional)

Steel frame hot dip galvanized at 450°C to ISO 1461:2010 specification. Degreased to remove grease, oils and metallic residues. Phosphatized to form a base for the corrosion resistant paint. Electrostatic paint application, kiln cured.

Manufacturing processes and finishes adhere to EU and ISO 14001 standards for environmental sustainability.

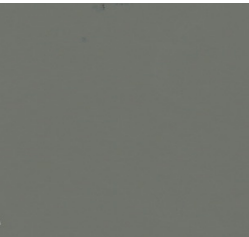
View swatches under FINISH OPTIONS

See more MEETING POINT under LOUNGE

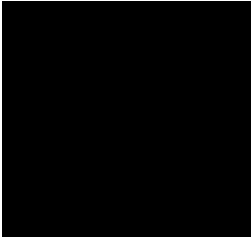
FINISH OPTIONS

FIBERGLASS – MOBILIARIO SOSTENIBILE FOR JANE HAMLEY WELLS

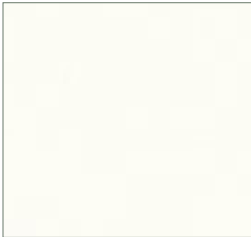
For color reference only. Suitable for outdoor use.



Concrete Grey 7023



Jet Black 9005



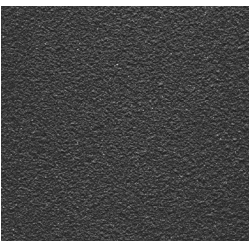
Pure White 9010



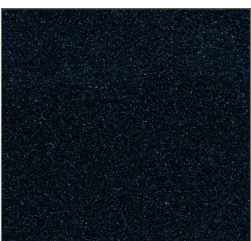
Traffic Red 3020

METAL – MOBILIARIO SOSTENIBILE FOR JANE HAMLEY WELLS

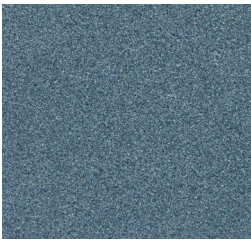
For color reference only. Suitable for outdoor use.



Anthracite



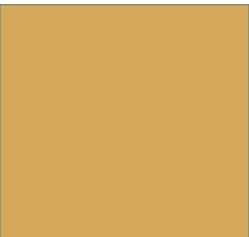
Black



Pewter



Silver



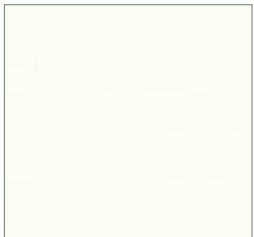
Beige 1001



Cobalt Blue 5013



Fir Green 6009



Pure White 9010



Stone Grey 7030



Traffic Red 3020