



1



2

## DIAGO DESIGN BY MOBILIARIO SOSTENIBILE FOR JANE HAMLEY WELLS

1	WOOD BENCH – WITH BACK
DIMENSIONS (IN)	72.8W x 22.0D x 32.3H/17.7 Seat Height
ITEM NUMBER	10175A / HEAT-TREATED WOOD
	10175C / HARDWOOD
	10175D / HPL
MATERIALS	Wood or HPL, steel

**Specify seat frame:** Galvanized only or powder coated

**Specify leg:** Galvanized only or powder coated

**Specify seat frame powder coat color:** Metallic anthracite, metallic black, metallic pewter, metallic silver, beige 1001, cobalt blue 5013, fir green 6009, pure white 9010, stone grey 7030, traffic red 3020

**Specify leg powder coat color:** Metallic anthracite, metallic black, metallic pewter, metallic silver, beige 1001, cobalt blue 5013, fir green 6009, pure white 9010, stone grey 7030, traffic red 3020

**Specify HPL finish (minimum quantity 5 units):** Concrete, smoke, straw, white granite

**Additional information:** Ground fixing standard, M10 rawlplugs (not included). Available without, must specify.

Structure made of 3mm carbon steel sheet. Steel frame hot dip galvanized at 450°C to ISO 1461:2010 specification. Degreased to remove grease, oils and metallic residues. Phosphatized to form a base for the corrosion resistant paint. Electrostatic paint application, kiln cured.

Hardwood autoclave treated. Wood density between 890 and 1070 kg / m<sup>3</sup>, hardness between 8.5 and 11 (very hard) and modulus of elasticity between 13,000 and 22,000 N / mm<sup>2</sup>. Wood slats treated with fungicide, insecticide and water repellent protector with U.V. filter.

2	WOOD BENCH – NO BACK
DIMENSIONS (IN)	72.8W x 19.7D x 17.7H
ITEM NUMBER	10176A / HEAT-TREATED WOOD
	10176C / HARDWOOD
	10176D / HPL
MATERIALS	Wood or HPL, steel

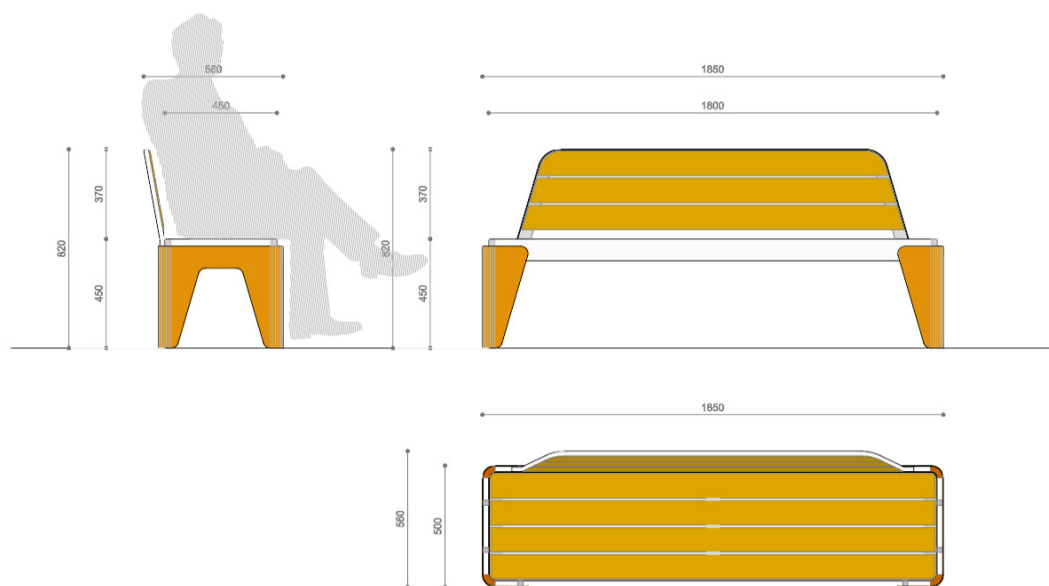
Heat-treated wood is Nordic pine and spruce thermally modified at 212°C, non-toxic, residue-free, dimensionally stable, classified as durability class 2 (BS EN 350) "durable" for all weather conditions.

Exterior-grade HPL, exceptional resistance to impact and scratching.

All manufacturing processes and finishes adhere to EU and ISO 14001 standards for environmental sustainability.

View swatches under FINISH OPTIONS

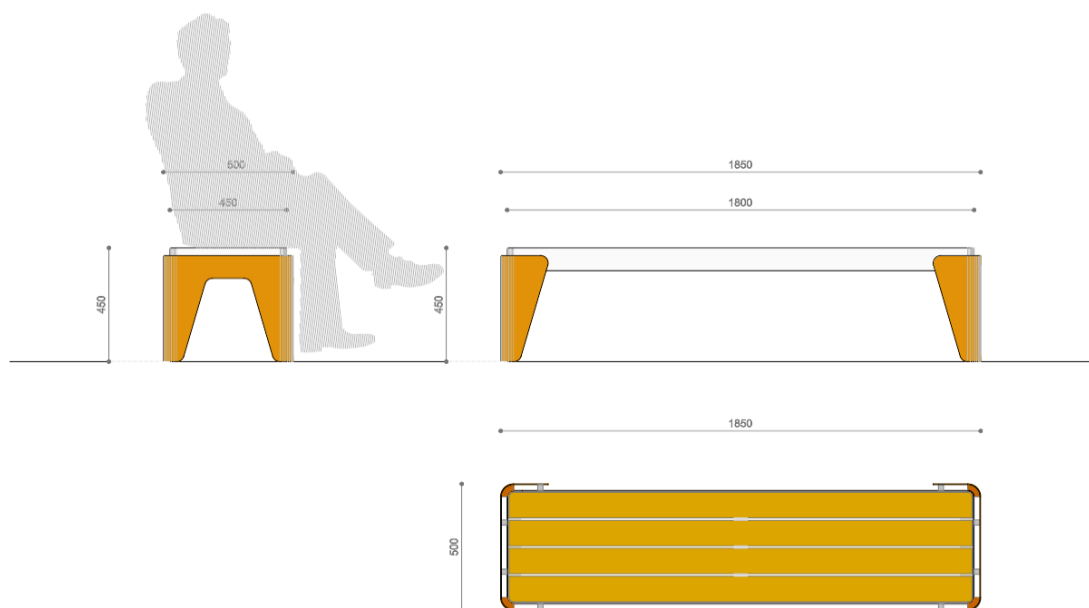
See more DIAGO under LITTER BINS and PLANTERS



## DIAGO

DESIGN BY MOBILIARIO SOSTENIBILE FOR JANE HAMLEY WELLS

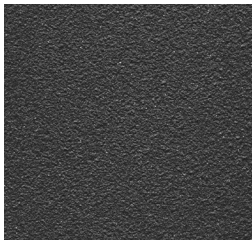
Measurement in millimeters



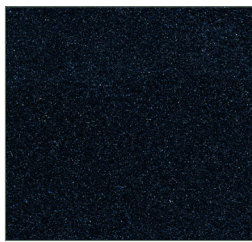
## FINISH OPTIONS

### METAL – MOBILIARIO SOSTENIBLE FOR JANE HAMLEY WELLS

For color reference only. Suitable for outdoor use.



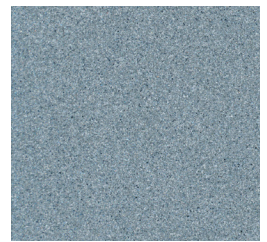
Anthracite



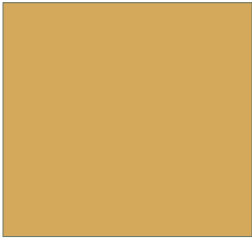
Black



Pewter



Silver



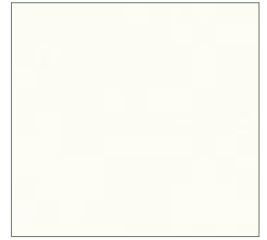
Beige 1001



Cobalt Blue 5013



Fir Green 6009



Pure White 9010



Stone Grey 7030



Traffic Red 3020



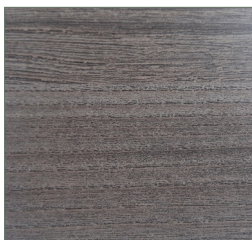
Galvanized Steel

### HIGH PRESSURE LAMINATE (HPL) – MOBILIARIO SOSTENIBLE FOR JANE HAMLEY WELLS

For color reference only. Suitable for outdoor use.



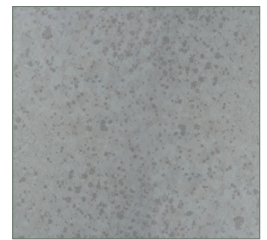
Concrete



Smoke



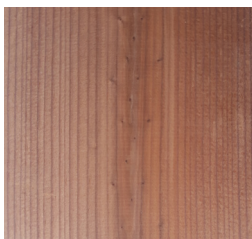
Straw



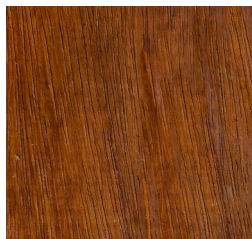
White Granite

### WOOD – MOBILIARIO SOSTENIBLE FOR JANE HAMLEY WELLS

For color reference only. Suitable for outdoor use.



Heat-treated wood



Hardwood

Manufacturer reserves the right to make minor design changes and to discontinue furniture items, materials and/or colors without notice. Printed colors cannot be guaranteed for accuracy.  
042203

**Jane Hamley Wells**

800 930 1990 toll free  
[www.janehamleywells.com](http://www.janehamleywells.com)  
[info@janehamleywells.com](mailto:info@janehamleywells.com)