



1



2

WATERFALL DESIGN BY KENKON STUDIO FOR JANE HAMLEY WELLS

1	SHOWER WITH BASE
DIMENSIONS (IN)	39.4W x 41.3D x 84.3H
ITEM NUMBER	WS 4998/ HOT & COLD TAP WS 4999/ COLD TAP (PICTURED)
MATERIALS	Teak, stainless steel

Additional information:

Tap height stands 43.3 inches from base of shower

Waterfall functions best when connected to a source with a maximum water pressure of 18-32 PSI. Cold tap only model can connect to a standard garden hose. Hot & Cold tap model requires water intake pipe hook-ups, provided by others

Shower and teak base are designed to be used outdoors. Additional drainage is not necessary. Base is slotted for water to freely flow out into the ground

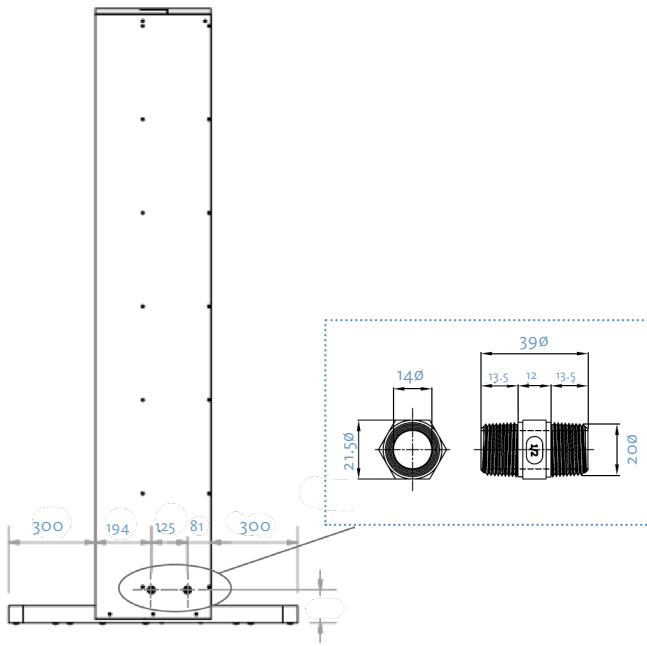
Waterfall unit with base is free standing. Shower without base must be fixed to a supporting object or countersunk into concrete or like material in order to remain upright

See reverse for more information

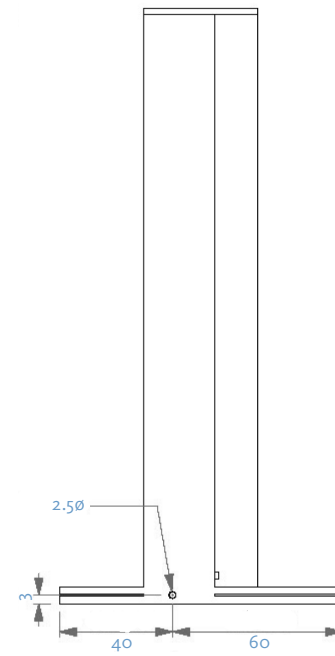
View swatches under INFORMATION

2	SHOWER NO BASE
DIMENSIONS (IN)	15.8 W x 9.8D x 80.3H / 3.7D SHAFT SIZE
ITEM NUMBER	WS 4998-NB/ HOT & COLD TAP WS 4999-NB/ COLD TAP (PICTURED)
MATERIALS	Teak, stainless steel

Kenkoon Studio reserves the right to make minor design changes and to discontinue furniture items, materials and/or colors without notice. Printed colors cannot be guaranteed for accuracy.



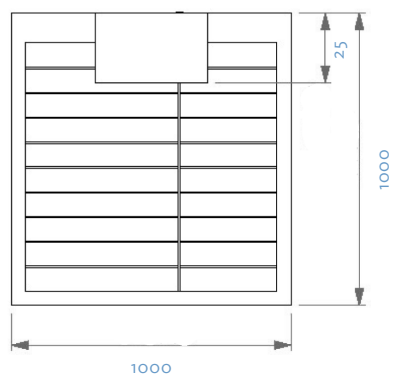
HOT & COLD PIPE FITTING



COLD PIPE FITTING

WATERFALL DESIGN BY KENKON STUDIO FOR JANE HAMLEY WELLS

Measurement in millimeters



PLANVIEW: BASE